

SOROKA – 10E

DIGITAL VOICE RECORDER



OPERATIONAL MANUAL

CONTENTS

1	PRODUCT SPECIFICATION AND DESCRIPTION OF ITS OPERATION	4
1.1	Purpose of the voice recorder.	4
1.2	Basic specifications of the voice recorder are listed in Table 2.	4
1.3	Light indication of operation modes and battery charging modes.	5
1.4	Design and operation of the voice recorder.	7
2	VOICE RECORDER USAGE	8
2.1	Operating limitations.	8
2.2	Preparation of voice recorder for usage.	8
2.3	Setting voice recorder parameters.	8
2.4	Usage of the voice recorder.	9
2.5	Creating a configuration file.	9
2.6	Verification of files digital signatures.	12
2.7	External microphone connection.	14
3	SYSTEM OF VOICE RECORDER LABELS.....	15
4	LOGGER.....	15
5	CURRENT REPAIR OF THE VOICE RECORDER.....	17
5.1	General instructions	17
5.2	Typical faults.....	17
6	STORAGE AND TRANSPORTATION.....	18
7	MANUFACTURER'S WARRANTY.....	18

Laboratory2, LTD

The operation manual contains data on technical characteristics, the device and the principles of work, rules of storage, instructions on operation and maintenance, necessary for the correct operation and full use of technical capabilities of a recorder "SOROKA-10E".

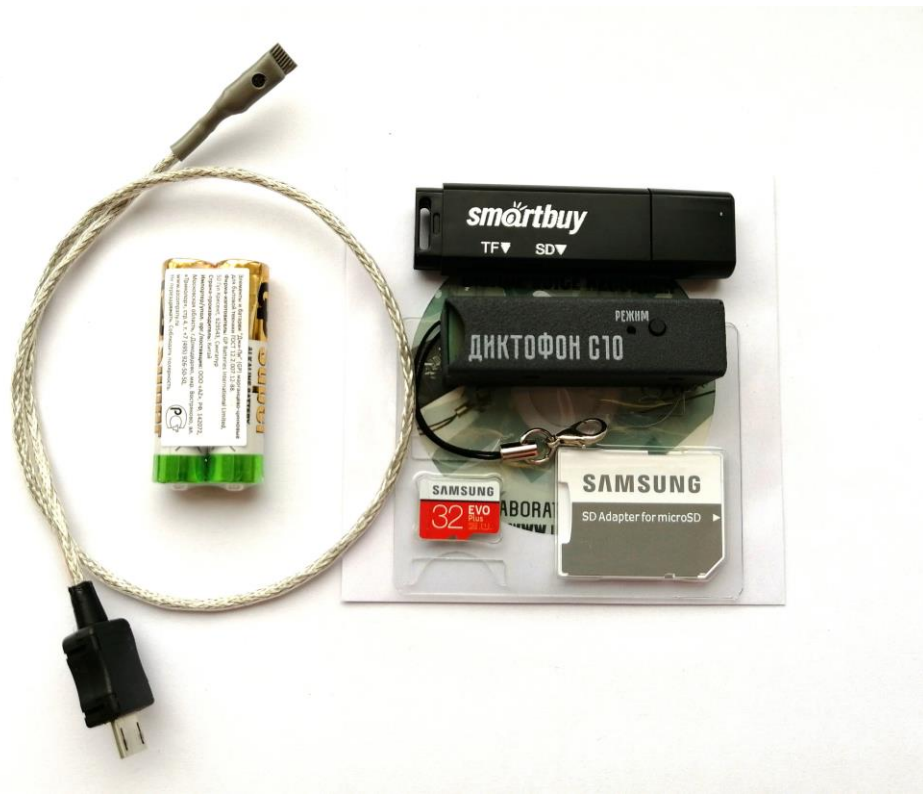


Fig. 1. Delivery set of voice recorder Soroka-10E.

Table 1. List of items supplied.

Name	The number	Option	
		10E	
1. Voice recorder «Soroka-10»	1	+	
2. Memory card microSDHC	1	32GB	
3. External microphone	1	+	
3. Battery LR03 of 1,5 V	2	+	
4. Passport	1	+	
5. USB cable to charge the recorder	1	+	
6. Packaging	1	+	
7. CardReader	1	+	

1 Product specification and description of its operation

1.1 Purpose of the voice recorder.

The voice recorder Soroka-10E is designed to record audio with the built-in digital MEMS microphone in mono mode to the micro SD memory card or micro SDHC Class4 or higher. The recorder is powered by LR03 battery of 1.5 V.

1.2 Basic specifications of the voice recorder are listed in Table 2.

Table 2. Specifications of the voice recorder SOROKA- 10E.

№	Parameter	Description	
1	Dimensions	50x14,2x16,2	
2	Operating temperature range	-20° C to +40° C	
3	Recording file format	«.WAV»	
4	Type of memory and filing system	Removable memory cards micro SD, micro SDHC; FAT32 filing system	
5	Interface with PC	via micro SD card	
6	Element power supply	Battery LR03 (1,5 V)	
7	Discretization of sound frequency	8 kHz, 16 kHz, 24 kHz, 32 kHz	
8	Resolution	8 bit(u-law), 16 bit, 20 bit.	
9	Microphone Sensitivity	-26 dBFS at 94 dB SPL (8-9 meters)	
10	Non-Linear Distortion Ratio	less than 3%	
11	Frequency range as per level - 3 dB	Sample rate	
		8 kHz	3 Hz – 3.384 kHz
		16 kHz	3 Hz – 6.768 kHz
		24 kHz	3 Hz – 10.152 kHz
		32 kHz	3 Hz – 13.536 kHz
12	Duration of work, when the resolution is 16-bit with u-law compression	Sample rate	Typical operating time* (hours)
		8 kHz	240
		16 kHz	164
		24 kHz	128
		32 kHz	109
13	Duration of work, when the resolution is 16-bit without compression	Sample rate	Typical operating time* (hours)
		8 kHz	218
		16 kHz	141
		24 kHz	112
		32 kHz	89
14	Duration of work, when the resolution is 20-bit.	Discretization frequency	Typical operating time* (hours)
		8 kHz	169
		16 kHz	90

Laboratory2, LTD

		24 kHz	79
		32 kHz	56
15	Suppression outside the band of operating frequency range while octave tuning		at least 60 dB
16	Average life		for at least 2 years
17	Average storage time		not less than 2 years
18	Battery charge time		up to 4 hours
19	Function of real-time clock		yes
20	Function of work as an alarm clock		yes (up to 10 alarms or daily cyclic alarm clock)
21	Function of files digital signature		yes
22	Voice operated switch (VOX) mode		yes (three sensitivity levels and record tags at operation in VOX mode)
23	Ability to manually control the recording level		yes (only under 16-bit resolution and compression u-law); from -12 dB to +18 dB in 6 dB.
24	Automatic sound level adjusting		yes (only under 16-bit resolution and compression u-law); from -12 dB to +18 dB in 6 dB.
25	Logger		yes
26	System of records tags in files		Tags at first and to the end of files; tags on pressing of the button; tags on operation of an akustopusk.
27	Cyclic recording		yes

*** Standard operating time is determined by results of measurements of period of operation of recorders with the LR03 battery, the vendor GP Batteries International Limited and the memory sticks microSDHC Samsung EVO 10Class 32GB.**

1.3 Light indication of operation modes and battery charging modes.

Light indication of operation modes and emergency cases of the voice recorder is shown in table 3.

Table 3. Light indication of modes and emergencies.

Modes and emergency cases of the voice recorder	Status of Indicator "Mode"
a) Getting started (when the recorder is being switching on by the user)	<p>1. In normal recording mode, indicator turns green and stays so until the end of opening file process (duration of file opening depends on the file size and free memory capacity). After opening the file, indicator "Mode" repeatedly flashes green(internal microphone) / orange (external microphone), or if the accumulator discharged - red. A further indication is possible only by pressing a button.</p> <p>2. If "<i>dict.ini</i>" file is tasked to operate by the alarm clocks, the indicator lights up green for 1 second and voice recorder enters standby mode by switching the alarm. A further indication is possible only by pressing a button.</p> <p>3. If the recorder is set up to operate as voice operating switch, the indicator lights up for 1 second green, and then lights up for one second orange. A further indication is possible only by pressing a button.</p>
b) Mono recording mode (after a brief pressing of control button)	<p>1. If the battery voltage is normal, the indicator repeatedly blinks green(internal microphone) / orange (external microphone).</p> <p>2. If the battery is low, the LED blinks several times in red.</p>
c) Recording mode with voice operated switch (VOX) (after a brief pressing of a button)	After detecting the audio signal of the preset level – similar to normal mode
d) Alarm clock record mode (after brief pressing of the button)	LED blinks slowly red and green colors, independently from the other recording modes and battery charge level.
e) Standby mode for alarm clocks (Short time after the brief pressing of the control button)	After brief pressing the button, there are triple-time alternate blinks red and green.
f) Emergency - incorrect filing system, the lack of a memory card or fault-of memory card	After switching the recorder on, indicator turns green, then - red, and then voice recorder turns off.
g) Status "No free space on the disc"	Indicator, after turning the voice recorder on, glows green for some time (depending on the size of the micro SD and size of file being created), then recorder turns off.

1.4 Design and operation of the voice recorder.

The appearance of the voice recorder Soroka-10E is shown in Figure 2.

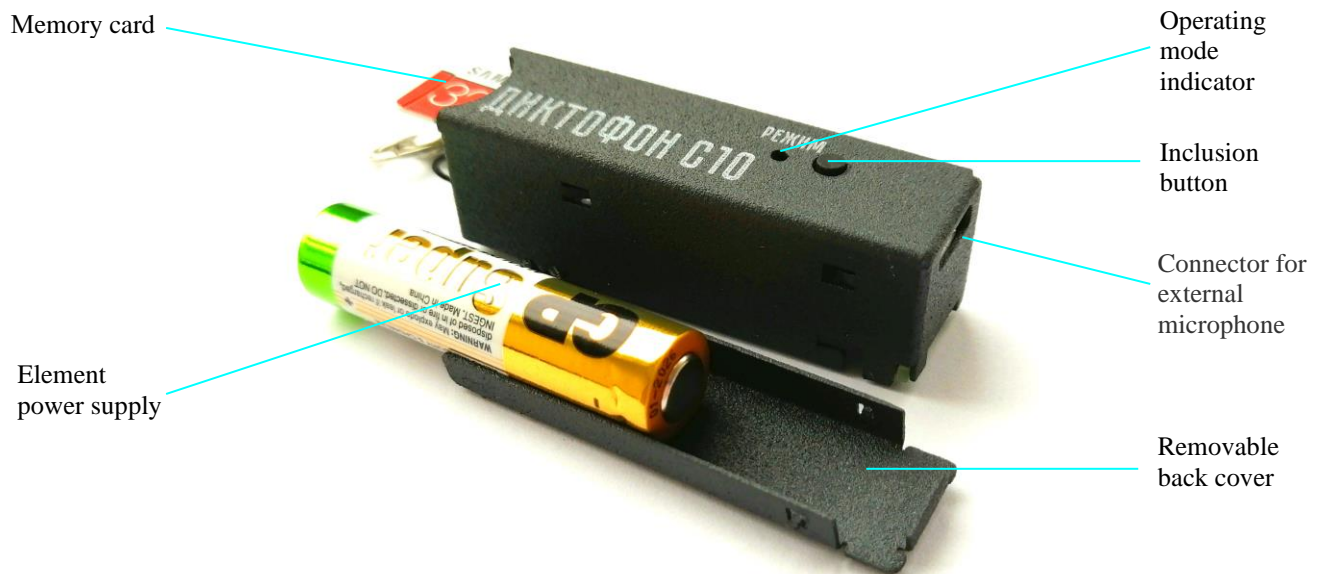


Fig. 2. Appearance of voice recorder Soroka-10E

2 Voice recorder usage

2.1 Operating limitations.

To avoid the voice recorder failure, observe the following rules:

a) Do not allow hit of dust and moisture on microphones since it can lead to considerable deteriorations in performance data of the digital microphone;

b) **Protect voice recorder from mechanical shocks – severe bumps may lead to possible microphone destruction.** If the voice recorder received mechanical damage during operation and this led to its failure, it is not covered by warranty.

c) Store a dictophone separately from the power supply battery, in order to avoid electrolyte leak.

2.2 Preparation of voice recorder for usage.

It is strongly advisable to read carefully this Manual before starting to use the voice recorder.

Before starting to use the voice recorder, it is necessary to carry out an external inspection for mechanical damage. On the surface, there should be no cracks, chips, dents. Metal parts should not have any traces of corrosion.

Before the work, it is necessary to configure the voice recorder parameters according to chapter 2.4 of this document.

Check the recording length of the voice in accordance with Table 2.

Check the microphone operation, make and listened to test recordings on your PC.

2.3 Setting voice recorder parameters.

Insert the micro SD card into the card reader. Format the micro SD under the filing system FAT32.

Create a folder with any name on your computer.

Copy the *dict.exe* program from the supplied CD disk (or download it from our website) into the created folder.

Run *dict.exe* program and following chapter 2.6 of this document create a configuration file named *dict.ini*

Copy the created file *dict.ini* to the memory card.

Insert the memory card into the voice recorder and switch it on. The voice recorder will read configuration file and save it to the internal memory. After reading the settings from the file, voice recorder will automatically remove it and continue to work in a user-defined mode (indication as shown in Table 3).

2.4 Usage of the voice recorder.

Insert the formatted under FAT32 micro SD card into the voice recorder.

Turn the voice recorder on by pressing the control button for 2 seconds. After turning on, voice recorder enters the operating mode which has been set by the user at the last setting.

To display the voice recorder current status, briefly press the control button. The current state is determined according to the indications on the table. 3.

To switch the recorder off, press the control button and hold it down till the mode indicator stops flashing or goes out (indicator must either begin to turn solid green, or goes off). Moreover, if the operation has been set for the alarm clock, the operation of all alarms is canceled.

After switching the voice recorder off, remove the memory card and insert it into a card reader. To verify the digital signatures, use the tab "Verifying files integrity" of the program dict.exe. Before using program, please, read paragraph. 2.7 of this document.

To listen to the recorded files, use any player that supports "WAV" format (recommended is SOUND FORGE version 6.0 and later).

2.5 Creating a configuration file.

Run dict.exe program and in the opened window select tab "Setting up the voice recorder", as shown in Fig. 3. This tab is used to create / read files *dict.ini* and it contains the following parameters and options:

a) Enable\disable voice activation (VOX). When this mode is active, recorder starts recording once the audio level of a sound signal exceeds a predetermined threshold. If the audio level is below a predetermined threshold for 15 seconds, then the voice recorder stops recording and enters the standby mode of the acoustic signal, without closing of the current file. Sound recording fragments are consistently registered in the current file (up to 70 fragments in one file). For each voice operated switching the tag indicating date and time of voice operated activation (the beginning of a fragment) will be created in the file (see paragraph 3). Record fragments of voice operated switch will be separated in the file from each other with either silence, or beep (item 2.6 (b)).

b) Beep between fragments. After switching the voice activated mode on, the user can choose a way of fragments separation in the current file. In case of setting a tag "**Beep between fragments**", all sound recording fragments in the current file will be divided by

beeps, or, otherwise by silence. Use of beeps between fragments allows the user to define aurally the beginning of a new fragment when listening files.

c) Sensitivity of voice recording switch. The user can adjust a threshold of voice operated switch by setting of value in the “**Sensitivity of VOX**” window. The higher the chosen sensitivity, the by more quiet sounds are recognized by recorder. The recommended sensitivity value is “**average**”. Under sound resolution of 20 bits sensitivity of VOX is a fixed value and is not adjustable.

d) To switch on/off the automatic adjustment of record level. After activation of this function, loud sounds will be weakened, and quiet, on the contrary – amplified. That will allow aligning the sound level automatically. This function isn't available (is not required) at sound resolution of 20 bits.

e) To set the fixed strengthening of record level. If the user or the program have turned sound level automatic adjustment off, then it is necessary to set record level strengthening from the available row. The recommended values are 0 dB, +6 dB and +12 dB. This function isn't available (is not required) at resolution of a sound of 20 bits.

f) To set the written-down files size. In this window the user has to choose the files size recorded to the memory card from the following row: 50 MB, 100 MB, 250 MB, 500 MB, 1000 MB, 1800 MB. The less the files size, the less time is required for their opening, but the more short-term pauses are in a sound recording when opening the new file.

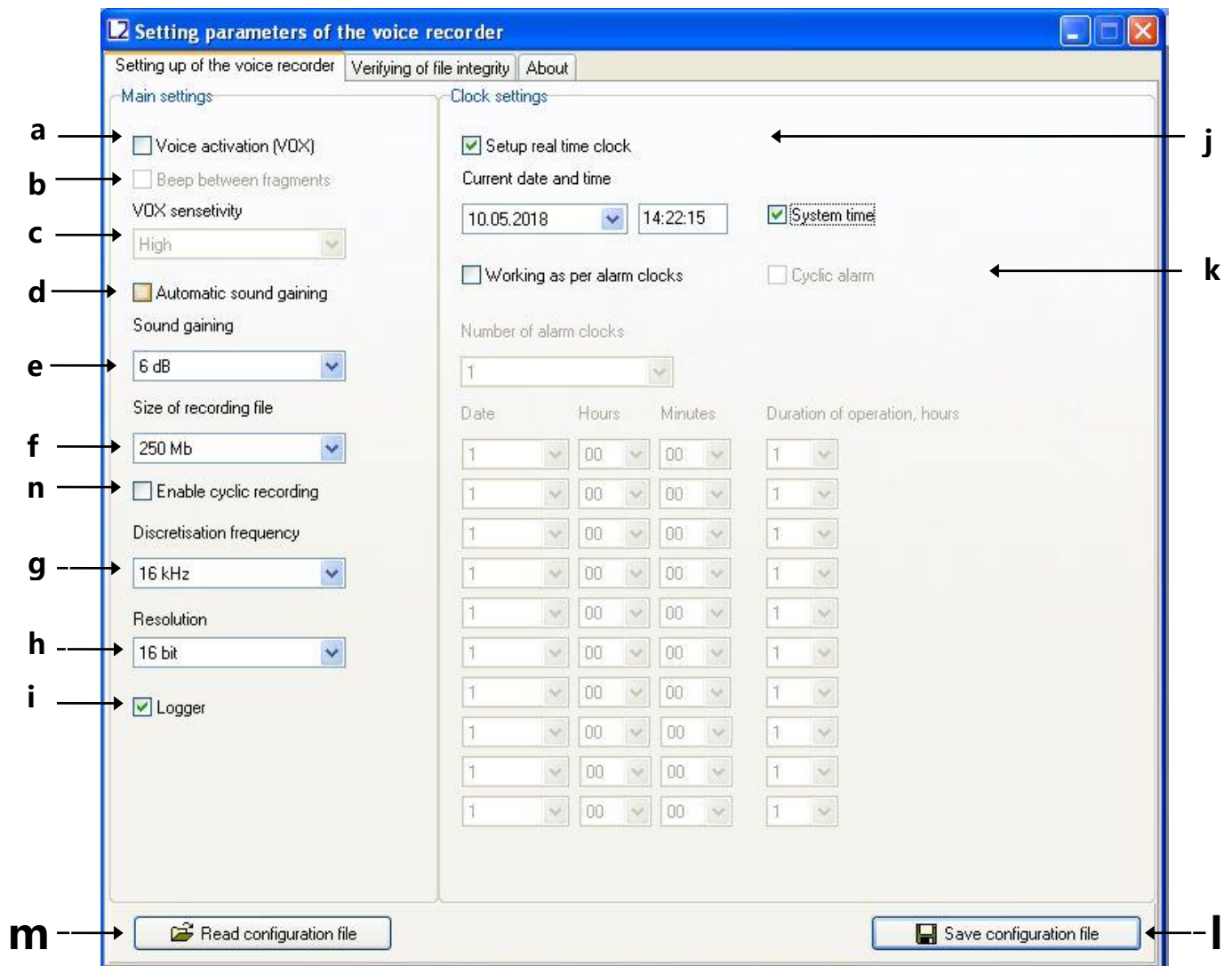


Fig. 3. Tab "Setting the recorder" in *dict.exe* program window.

g) Choice of sampling frequency. Possible values are 8 kHz, 16 kHz, 24 or 32 kHz. The higher sound sampling frequency value, the higher quality of the written-down sound, however the time of autonomous work of a voice recorder is less.

h) Sound resolution. The voice recorder can record in three formats: **16 bits under u-law compression, 16 bits without compression, 20 bits without compression.** Use of u-law compression allows to significantly increase record duration and by two/tree times decrease memory consumption on the microSD card in comparison with the record modes in a format 16/20 bits without compression.

i) Switching on/off logger. When logger is switched on, all main events will be saved into internal memory of voice recorder with their time and date. There is also stored voice recorder production data (Identification number and number of the internal software). At normal switching off of the voice recorder, the last 48 events will be copied from the internal memory onto microSD in the INF_REG.TXT file. More detailed information about the logger see in paragraph 4.

j) To set the current time and date. To use the current system time, put a tick to "System time". To manually change date and time in file system of a voice recorder, remove tick on "System time" and put a tick "To adjust real time clock".

k) Switching on/off work on timers. To activate recording at certain moments and for certain time period, it is necessary to establish a tick to "**Work on alarm clocks**". Operation is possible either in the mode of "A cyclic alarm clock" or by individually adjusted alarm clocks. In the mode of "A cyclic alarm clock" the voice recorder makes records daily in the adjusted time interval. During the work by individual alarm clocks it is necessary to set quantity of alarm clocks in the "Quantity of alarm clocks" window, depending on the necessary number of record activations. For initialization of each alarm clock set date (day of month) and activation time, as well as record duration after which voice recorder will switch off and expect activation of the following alarm clock. Alarm clocks work in strict sequence from the first to the tenth. The voice recorder will be switched off automatically after the last alarm clock activation.

l) Writing down the configuration file. After adjustment of the required configuration press the "Save configuration file" button. The program will create new or will rewrite already available file of the *dict.ini* settings to the specified directory. Copy the created *dict.ini* file to the microSD card and switch voice recorder on.

m) Reading the configuration file. If it is necessary to read contents of earlier created settings file, then press the "Read configuration file" button and choose a directory for reading of the *dict.ini* file.

n) Switching on/off cyclic recording. This feature could be activated if it is needed to continue recording when the memory card is full. Information will be recorded over the oldest one on the memory card.

2.6 Verification of files digital signatures.

Run *dict.exe* program and select the "Verifying of file integrity" tab, as shown in Fig. 4. This tab is designed to verify digital signatures of the desired file.

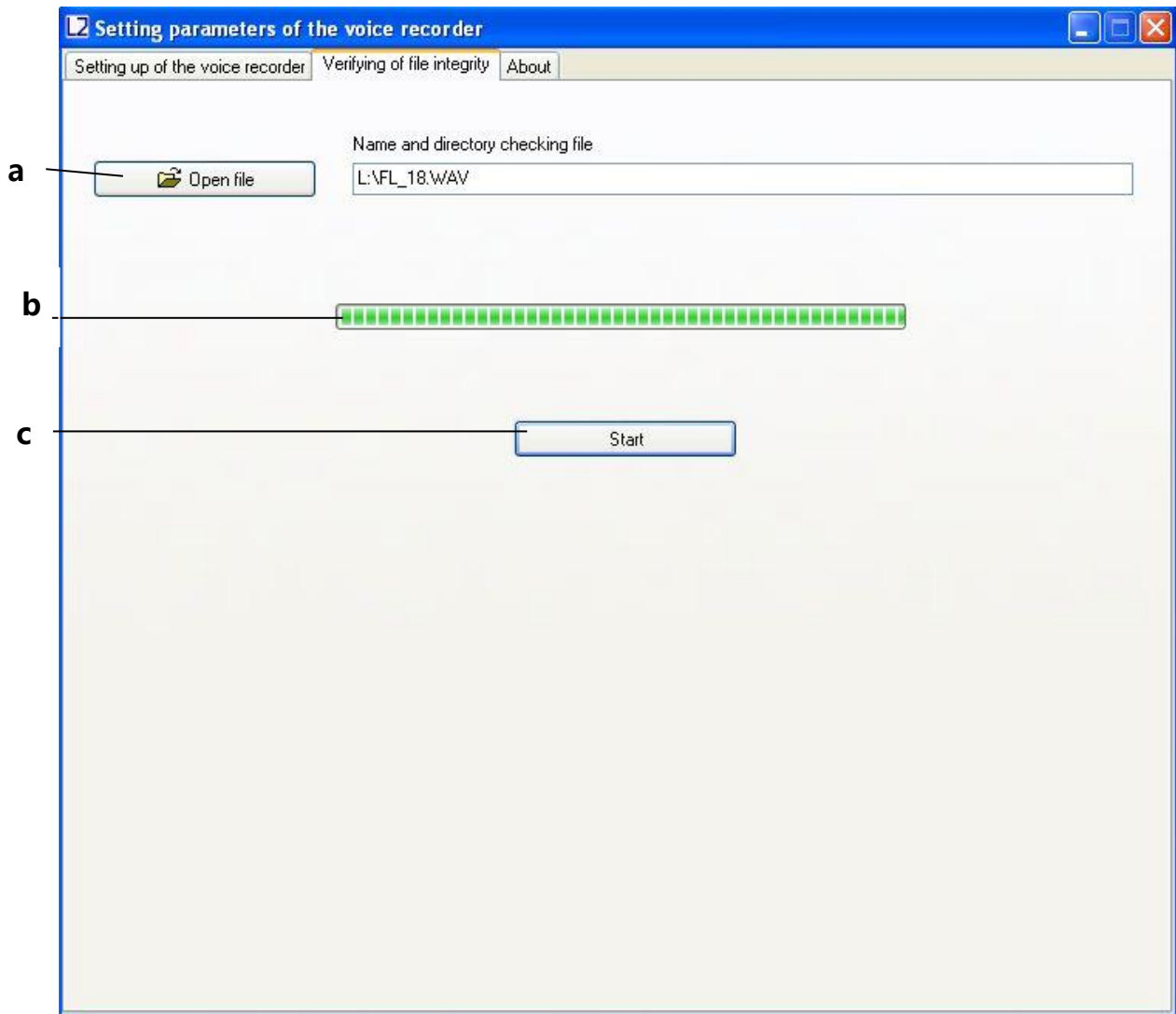


Fig. 4. Example of digital signature verifying.

In the tab "Verifying of file integrity " there are the following controls:

- a) **Open the file.** Click "Open File" and select the desired directory and file. After selecting of the desired file, the program will perform checking of its digital signature.
- b) **Indicator of the progress digital signature calculation.**
- c) **Button "Start" / "Stop".** File digital signature checking runs by pressing the "Start" button. By pressing "Stop" button the checking process stops.

At the end of the file checking, the program will show the message "The digital signature is valid", if the integrity is not violated. If the file contains errors, the program displays the message "The digital signature is not valid!".

Also, for each file, the serial number of the voice recorder is shown (Fig. 5).

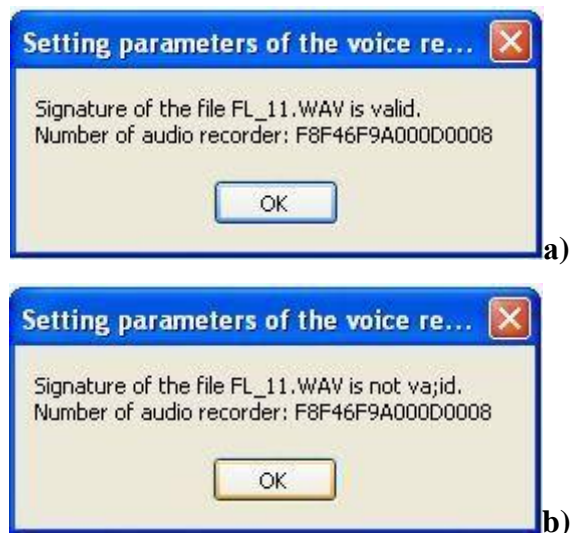


Fig. 5. Output of files test results: a) a digital signature of the file is valid; b) Digital signature of the file is not valid.

After verifying the digital signature of the selected file *dict.exe* program generates a report with information available in the labels file. The report contains information about the number of tags in file to be scanned, their names and their corresponding samples.

This file has the same name as the file which is checked, but with the extension «.txt» (for example, if the original file is named «FL_8.WAV», the file with information about the labels will have the name «FL_8.TXT»). The generated file with information on labels is automatically stored in the directory of the originally scanned file or directory in which to save the file (see. 2.7 (b)). File with information on labels can be useful when listening to audio in programs that do not have label recognition.

```
File tags "FL_11.WAV"
Number of tags: 3
```

Number	Sample	Sect.	TAG
0001	0000002030	data	2016:03:11 09:14:54
0002	0000034798	data	2016:03:11 09:14:56
0003	0000065518	data	2016:03:11 09:14:58

Fig. 6. The file structure with information about the tags, formed by *dict.exe* programm.

2.7 External microphone connection.

The external microphone is connected via the USB connector of the recorder. The external microphone connection is checked when the recorder is turned on. The recorder indicates the use of an external microphone with orange (simultaneous green and red) blinking LEDs.

3 System of voice recorder labels

Recorder Soroka-10E supports automatic layout of files. Tags system makes files analysis more convenient and allows you to avoid wasting time of files creation and modification when copying. The labels in the recorded files are placed in the following cases:

- 1) At the beginning and at the end of each file.
- 2) When you press the control button of voice recorder for the purpose of marking the desired moment.
- 3) In the voice activation mode, every time when it detects an audio signal (actuation of the voice activation mode).

Analysis of the tags may be formed, for example, using Sound Forge version 6.0 or higher, or using software supplied *dict.exe* (Section 2.7).

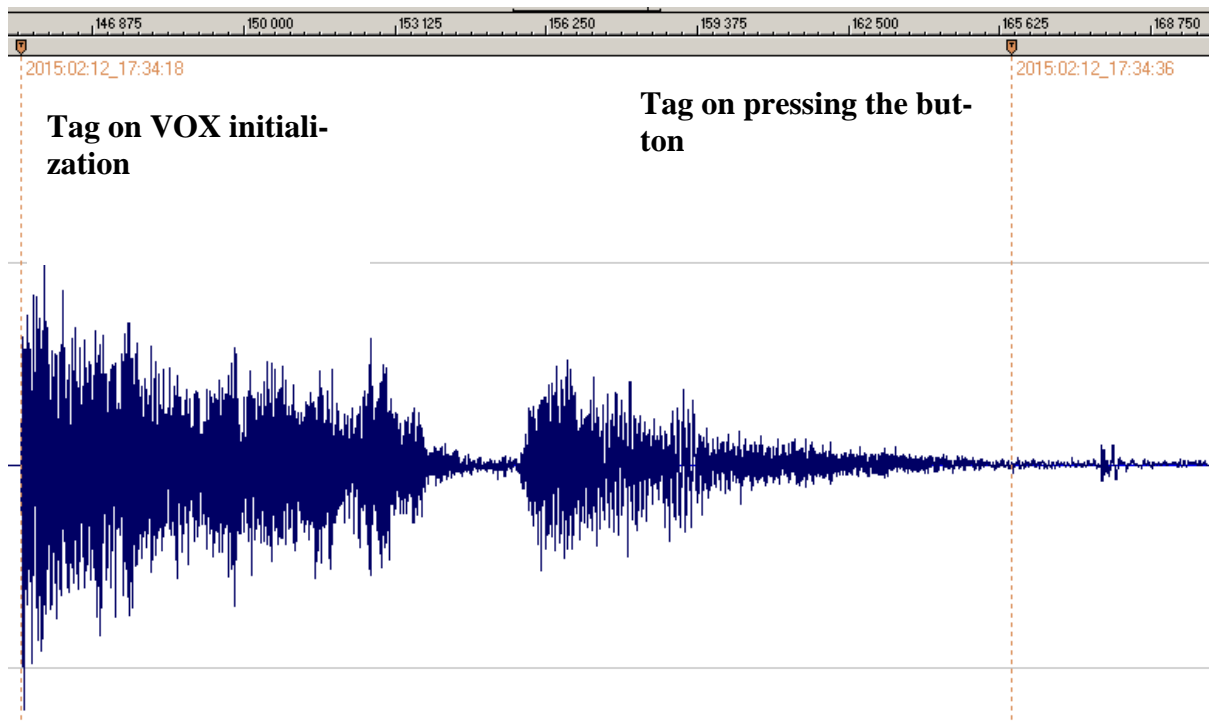


Fig. 7. Example of automatic tags recognition by the **Sound Forge** program in audio files of voice recorder. The name of each label corresponds to the date and time of its creation.

4 Logger

Logger is designed to register history of recorder's operation and emergencies to the non-volatile memory.

In addition, logger contains manufacturing data (recorder identification number and firmware number)

Logger stores from 32 to 48 latest events, as well as their time and date.

Laboratory2, LTD

If the logger is turned on (see. 2.6 (i)) and voice recorder is switched off (except emergency reset) logger is recorded to micro SD into the file INF_REG.TXT.

It is not recommended to use the logger continuously since this reduces nonvolatile memory resource of the voice recorder (it only affects work of the logger itself).

Brief description of the recorded events and the logger structure is given in Table 4.

Table 4. Description of logger tags and events.

Shorthand	Description
DEVICE_NUMBER	Voice recorder identification number
POWER_RESET	Reset by power failure
PIN_76_RESET	Processor hardware reset
PMMSWBOR	For official purposes
WAKE_UP_FROM_LPX.5	For official purposes
SECURITY_VIOLATION	For official purposes
SVSL	For official purposes
SVSH	For official purposes
SVML_OVP	For official purposes
SVMH_OVP	For official purposes
PMMSWPOR	For official purposes
WATCH_DOG_TIME_OUT	Looping / stop of the processor's program due to memory card or software failure
WDT_PSWRD_VIOLATION	For official purposes
FLASH_PSWRD_VIOL	For official purposes
PLL_UNLOCK	For official purposes
PERF_AREA_FETCH	For official purposes
PMM_PSWRD_RESET	Forced software reset (occurs when overwriting voice recorder microprocessor program). Is called forcibly.
LOW_VOLTAGE_TURN_OFF	Low Battery - The recorder is turned off
BUTTON_TURN_OFF	Voice Recorder is turned off by pressing
BUTTON_TURN_ON	Turning the voice recorder on by pressing
SD_MEMORY_IS_OVER	No free space on the microSD - the voice recorder is switched off
ALARM_TURN_OFF	Voice recorder is turned off by timer
ALARM_TURN_ON	Voice recorder is turned on by timer
SD_READ_TIMEOUT	Micro SD does not respond to a command to read data
SD_WRITE_FAILURE	Command to record data do not pass to micro SD
NO_SD_BLKWR_RESPONSE	There is no confirmation from microSD to the recording data block
PROGRAM_BOR_RESET	Complete reset of the voice recorder. Called forcibly, if the voice recorder has not detected a microSD memory card or if the memory card of filing system contains errors.
SNMI_INTERRUPT	Microprocessor system failure (it is necessary to save the file INF_REG.TXT)
FLASH_ACCESS_ERROR	Error of the program (it is necessary to save the file

	INF_REG.TXT)
OSCILATOR_FAULT	Hardware failure of the oscillator
NMIFG_INTERRUPT	Microprocessor system failure (it is necessary to save the file INF_REG.TXT)
EMPTY_CELL	Empty cell
UNDEFINED_ERROR	Unspecified error or reset
DICT_SOFTWARE_NUMBER	Number of internal recorder software

5 Current repair of the voice recorder

5.1 General instructions

If any defect of the voice recorder is detected, repair works are needed. Current repair of the voice recorder should be made at the factory or in the workshop.

Attention!!! Unauthorized opening of the voice recorder leads to the withdrawing of the warranty from the voice recorder.

5.2 Typical faults

Typical faults of the voice recorder, which may be eliminated by the user, are shown in Table 5.

Table 5. Typical faults of the voice recorder, and their solutions.

Faults	Methods of correction
The voice recorder doesn't switch on	Measure tension on the battery or insert the new battery of a power supply of LR03 (1,5 B).
Recorded audio files are not readable or contain errors	Replace the memory card. If this does not work, then contact the service center.

6 Storage and transportation

6.1 The voice recorder should be kept in its original packaging in heated storage rooms at a temperature ranging from +5 to +25 °C with relative humidity less than 80% (at +20 °C). The environment must be free from pairs of acids, alkalis and other aggressive impurities.

6.2 Store a dictophone separately from the power supply battery, in order to avoid electrolyte leak.

6.3 The Voice Recorder in special packaging may be transported in closed vehicle (rail cars, containers, cars, water [sea or river] transport), as well as in sealed cockpits of planes and helicopters. To carry out transportation of a dictophone without food battery.

7 Manufacturer's warranty

7.1 The manufacturer guarantees the accordance of the voice recorders to the technical requirements, providing that the customer observe instructions for operating conditions, transportation and storage, set up by this manual.

7.2 The warranty period is 12 months within the warranty period of storage.

7.3 A warranty period of storage of 18 months from the date of production.

7.4 The warranty period is extended for the period of warranty repair.

7.5 In case of defects, discovered in the voice recorder due to the manufacturer's fault within the warranty period, troubleshooting and replacing (if needed) of the voice recorder and its components are made at the manufacturer's expense.