

Rec Manager for EdicMini Daily, LED and Ray

User Manual

Contents

Introduction	3
Connecting to the PC	3
Operating the Program	3
Main Menu	4
Recorder Settings	6
Appendix 1 (Quality and VAS parameters for Daily).....	10

Introduction

The Rec Manager for EdicMini Daily (LED, Ray) is intended to provide access to the Recorder's memory as well as to set the Recorder's parameters through the PC.

The Recorder's memory is used both to store recordings made by the Recorder and to store files recorded from the PC. You can also upload recordings from the PC to be further played back in the Recorder. These are sound files (wav) of the Windows PCM format featuring the following characteristics:

- Number of channels: 1 or 2
- Bitrate: 16 (Block align = 2);
- Sampling rate: 4000, 8000, 13300, 20000 or 40000 Hz;

Memory access to all modifications of the Recorder can be achieved using USB-SPI adapter.

The program is provided as an executable file installer.

To install the software run the above file and follow the instructions.

The default installation is in the folder {Program Files}\EdicMini Daily\Rec Manager with the new group of EdicMini Daily shortcuts in Start\Programs. To uninstall the program you can either use shortcut from the group or go to Control Panel\Add or Remove Programs.

The delivery set also includes USB-SPI drivers to connect the Recorder, so it is recommended to install the program before the Recorder is first connected to the PC.

Connecting to the PC

Install the Rec Manager for EdicMini Daily program onto your PC.

To connect the Recorder via USB-SPI adapter:

- connect the adapter to an available USB port of the PC;
- connect the adapter to the recorder (**Attention!** Carefully follow the procedure sequence);
- if you run New Hardware Wizard, go through all steps of the wizard program by selecting manual search for drivers and specifying the path to the adapter drivers (after installing the program, the drivers are in the Drivers folder located in the folder of the Rec Manager program);
- run the Rec Manager and select Adapter USB-SPI connection type .

Operating the Program

The program's interface corresponds to a standard Windows interface.

The main interface element is the Recorder Content panel displaying a list of recordings or files of the Recorder's memory. There is also the Explorer panel which is similar to the Explorer program displaying computer directories' content.

At the bottom of the program's window, there is a status line with the information about the Recorder (model, serial number, firmware version, recorder's clock, battery status, amount of free memory

as well as maximum recording time at the current parameter settings etc.). The status line is displayed only in case the Recorder is connected to the computer.

If there is any operation with the recorder, a notice appears in the middle of the program's window showing the type of operation and its progress. While the operation is in progress, the program cannot perform any additional activity.

The full access to the program's commands and options is in the Main Menu. Some of the Main Menu commands are also presented as buttons on the tool panel. Most of the commands have hot keys. The full description of the commands is in the Main Menu section of this document.

Most of the Recorder's commands are in the Recorder Menu. Some of them are presented as buttons in the upper part of the Recorder content.

Similarly the commands referring to the Explorer Panel, are in the Explorer menu. There is also the Explorer Window command allowing it to show/hide this panel. Some commands demand this panel to be visible; particularly these are most of the Explorer menu commands as well as Copy To PC and Move To PC commands.

The program can interact with the Recorder by the following types of connection: Standard (USB-SPI) and Demo Mode. Regardless of the type of connection the program recognizes data exchange with the Recorder. However the complete functional volume is achieved only when connecting the Recorder via **USB-SPI** using adapter, other connections aren't that comprehensive, as there is no direct connection with the Recorder itself and therefore no access to some service information such as: serial number, battery status, clock etc. Synchronize Clock command is not active as well.

The Demo Mode connection is virtual emulating work with a real recorder.

If the Recorder is recognized, there is a Recorder content panel in Show Record Mode, and the status line appears at the bottom of the window.

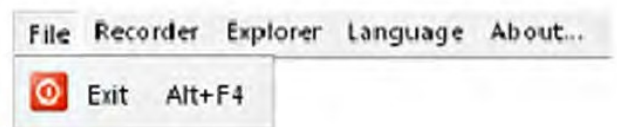
When connecting, it is also verified, the Recorder's content is protected with password (see Recorder's Settings, Recorder's Password). With the password being applied, a dialogue window will appear to ask for the password for further operating the Recorder. With a wrong password entered, the program offers to reset password by erasing the Recorder's content including settings. With this operation accepted, the program clears the Recorder's memory and resets its settings within a few seconds. After that the program will switch to its standard mode. With the reset denied, the program asks to enter password again until a right one is entered (after that the program switches to its standard mode), or the Recorder is turned off or Cancel button is pressed. In the latter case, the RecManager works as if the Recorder isn't connected at all.

Main Menu

This paragraph covers the Main Menu structure and commands description.

File

Exit – to exit the program.



Recorder

Refresh content – refreshes the recorder's memory content (reloads a list of the recordings and files that are in the recorder's memory).

Records – switches the Recorder content panel in to a mode of showing recordings that are in the recorder's memory.

Flash Drive – switches the Recorder content panel in to a mode of showing files that are in the recorder’s memory. This mode can be forbidden by the recorder’s settings or not supported by the recorder.

Copy To PC – copies the items (recordings or files) selected in the Recorder content panel to the current folder of the Explorer panel. While copying recordings, the result file names are created on the base of a mask that is set in the program settings. While copying files their names stay the same. If there already is a file with the same name in the computer, the program suggests overwriting the file, changing the file name, or canceling the command. This command is active when the Explorer panel is visible.

Move To PC– is analogous to Copy To PC command, but after the command is finished, copied items are deleted.

Copy to default folder – copies selected in the Recorder content panel items (recordings or files) into a default folder that is set in the program settings. The Explorer panel can be invisible.

Move to default folder – is analogous to Copy to Default Folder command, but after the command is finished, copied items are deleted.

Copy selected part – allows copying the selected items (recordings or files) from the Recorder content panel to the current folder of the Explorer panel.

Erase selected items – erases from the recorder’s memory items (recordings or files) selected in the Recorder content panel.

Format recorder memory – erases all the items (recordings or files) from the recorder’s memory.

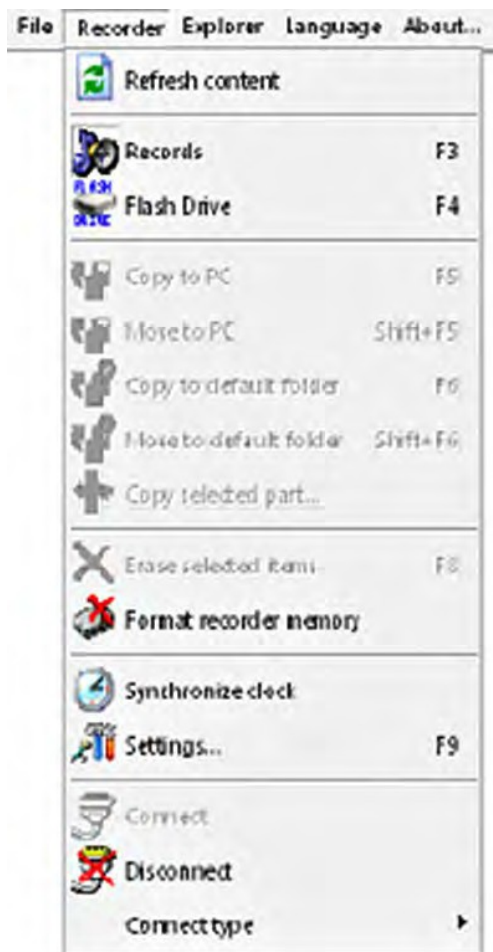
Synchronize clock – sets the current PC time in the recorder. Command available through connection via USB 1.1.

Settings – shows a dialog window where you can see and change the recorder’s settings.

Connect – attempts to connect to recorder by means of the current type of connection.

Disconnect – disconnects from the recorder. It is recommended, that this command is activated before the recorder (the adapter) is disconnected from the PC.

Connect type – the current type of connection can be chosen in the menu of this command. After the type of connection is chosen, the command Connect is automatically implemented.



Explorer

Copy to recorder – downloads selected in the Explorer panel items into the recorder. This command depends on the mode of the Recorder content panel. In the Flash Drive mode, files are copied without any change: after following uploading, they will be identical to the original ones. If there is no free space for copying files, the command is canceled. In the showing content mode, it is possible to copy only audio files which formats are supported by the program; otherwise, a notice appears that the format is not supported. Before copying audio files, the dialog window appears where you can choose a format in which the record will be downloaded to the recorder. In comparison with copying files, if there is not free space for a whole audio file (the needed amount of memory is detected according to the chosen format), you can

download the audio file partly according to the free memory space.

Show wave-file info – shows a window with characteristics of the chosen in the Explorer panel audio file along with the information about the file's digital watermark.

Go to default folder – sets a default folder of the program settings as a current folder of the Explorer panel.

Set current folder as default – sets the current folder as a default folder.

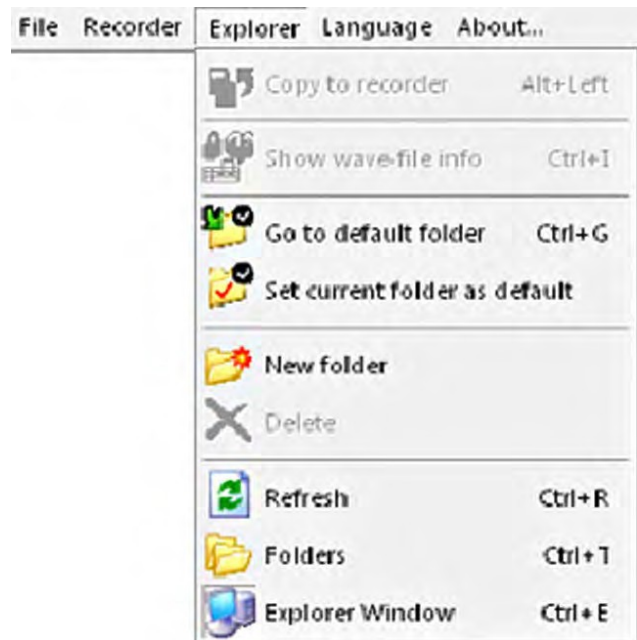
New folder – creates a new folder in the current folder.

Delete – erases selected in the Explorer panel items.

Refresh – refreshes the Explorer panel content.

Folders – shows/hides the folders' directories.

Explorer window – shows/hides the Explorer panel.



Note: Along with abovementioned functions of the Explorer panel, the list of folders and files supports a content menu for all the items. Use the right mouse button or a correspondent button of the keyboard to call this menu. This menu is identical to the menu of the Explorer for Windows.

Language – allows to choose a language for the program interface (in the list there are all the languages available for the program). English is set by default.

About – shows a dialog window with the information about the program version.

Recorder's Settings

To adjust settings, use options of **Settings** or the corresponding buttons of the Toolbar.

The alterations are saved only after **Store settings** to recorder have been applied.

In case of undesired alterations, **Restore settings from recorder** helps to go back to the previously specified settings.

Save settings to file saves current settings into the external file.

Load settings from file upload recording settings from the previously saved file.

Restore factory settings helps to go back to default settings.

General Tab

Basic Recorder settings are in General Tab.

You can set the record profile in **Profile 0 - Profile 7**. When uploading configuration data from the Recorder (starts automatically after the Recorder is connected or with the help of the corresponding button of the Menu), the active profile tab becomes active. With the settings being saved, the active Profile is set in accordance with the active Tab.

Note: active profile can be set only in case the Recorder is connected to the PC via USB adaptor (USB-SPI).

Each Profile has the following settings:

Profile Name specifies profile's name. Only Latin letters can be used in the profile's name.

Bit rate specifies recording sampling rate.

Compression specifies one of the compression types to perform recording.

Once Timer – using this option, you can set automatic start of recording for the period specified in the fields **Start** and **Stop**. Select one of 3 settings: Once Timer, Daily Timer, or Off.

VAS specifies parameters for voice activation system. There are 3 available sensitivity levels: high, medium and low.

Cyclic recording switches Cyclic Recording Mode by means of **Enable cyclic recording**. The option also specifies the duration of the cyclic recording stated as percentage to the overall memory capacity in the field **Cyclic buffer length** (% of memory capacity).

Amplifier settings specify recording amplification parameters and sensitivity level of AGC (Automatic Gain Control).

Files Tab

The **Files** Tab has the following settings:

On recorder content – this group of switches specifies operations to be carried out automatically when connecting the Recorder (or when launching the program if the Recorder has been already connected). With the option **Auto download records to default folder**, the recordings will be uploaded into the default folder the path to which is specified in the **Default folder** field. To change default folder go to the Explorer panel. If you try to do this by pressing the ">>" button near the field, 'Go to default folder' command will generate an error. To solve this problem complete the operation and restart the program. This will reset default folder settings.

You can also specify additional uploading options: **Non-downloaded records only** - uploads recordings marked by the status Non-downloaded; **Delete records after download** - automatically deletes recordings uploaded at this operation.

Split - with the option **Split record to several parts while downloading**, the program splits recording into several files with the size specified in the field **Part size**.

File name mask sets the mask, basing on which the file names will be given after the recordings have been uploaded. The example result is in the **Example result** bar.

Restrictions allow it to forbid deletion of non-uploaded recordings with the switch **Disable erasing of non-downloaded records**.

Advanced Tab

Recorder password – in this field you can specify a password required to connect the Recorder to the PC. If the password has been changed, when saving settings the program asks to re-enter password. In case the data don't match, the password does not change. The case-sensitive password may contain from 1 to 7 symbols. To deactivate password protection, clear the password field by entering a blank password and save the recorder's settings.

With the check box **Simple record quality setup**, **Simple VAS setup** and **Simple amplifier setup** you can switch the type of the panel with settings for this parameter to the window with simplified menu, the names of which can be understood easily.

Synchronize recorder time with system time sets the current PC time in the recorder. The command is active only in case the Recorder is connected to the PC via USB adapter (USB 1.1)

With the check box **Skip silence if VAS was used**, the program won't count silent passages formed with VAS; either while determining the recording's duration or while uploading.

Show voice parts separately if VAS was used – shows each part (sub-recording) of one and the same recording with VAS in a common list of recordings as separate recordings with the numbers 1,2, etc. The date of sub-recordings compared to the start of the recording is shown in the field Data. Sub-recordings can be selected in any combinations with the recordings, but only Copy to PC and Copy to default folder are applied to sub-recordings. When sub-recordings are downloaded to the PC, the recording itself isn't marked as downloaded (even if all of the sub-recordings are uploaded)

Appendix №1(Quality parameters and VAS)

Quality parameters

[Highest]

1033=Highest

1049=Наивысшее

; BitRate values: 40000=0; 20000=1; 13300=2; 8000=3; 4000=4;

BitRate=0

; Compression values: NoCompress=0; uLaw=1; ADPCM=2;

Compression=0

; Compress Parameter: Compression=ADPCM: 2 bit=1; 4 bit = 2;

; Compress Parameter: Compression=uLaw: Scale 1 = 0; 2 = 1; 4 = 2; 8 = 3; 16 = 4;

CompressParam=0

[High]

1033=High

1049=Высокое

; BitRate values: 40000=0; 20000=1; 13300=2; 8000=3; 4000=4;

BitRate=1

; Compression values: NoCompress=0; uLaw=1; ADPCM=2;

Compression=0

; Compress Parameter: Compression=ADPCM: 2 bit=1; 4 bit = 2;

; Compress Parameter: Compression=uLaw: Scale 1 = 0; 2 = 1; 4 = 2; 8 = 3; 16 = 4;

CompressParam=0

[Medium]

1033=Medium

1049=Среднее

; BitRate values: 40000=0; 20000=1; 13300=2; 8000=3; 4000=4;

BitRate=1

; Compression values: NoCompress=0; uLaw=1; ADPCM=2;

Compression=1

; Compress Parameter: Compression=ADPCM: 2 bit=1; 4 bit = 2;

; Compress Parameter: Compression=uLaw: Scale 1 = 0; 2 = 1; 4 = 2; 8 = 3; 16 = 4;

CompressParam=2

[Low]

1033=Low

1049=Низкое

; BitRate values: 40000=0; 20000=1; 13300=2; 8000=3; 4000=4;

BitRate=3

; Compression values: NoCompress=0; uLaw=1; ADPCM=2;

Compression=2

; Compress Parameter: Compression=ADPCM: 2 bit=1; 4 bit = 2;

; Compress Parameter: Compression=uLaw: Scale 1 = 0; 2 = 1; 4 = 2; 8 = 3; 16 = 4;

CompressParam=1

[Lowest]

1033=Lowest

1049=Наинизшее
; BitRate values: 40000=0; 20000=1; 13300=2; 8000=3; 4000=4;
BitRate=4
; Compression values: NoCompress=0; uLaw=1; ADPCM=2;
Compression=2
; Compress Parameter: Compression=ADPCM: 2 bit=1; 4 bit = 2;
; Compress Parameter: Compression=uLaw: Scale 1 = 0; 2 = 1; 4 = 2; 8 = 3; 16 = 4;
CompressParam=1

VAS parameters

[Preset 1] 1033=High 1049=Высокая 1066=asjkdfh Level=-30 Time=2	[Preset 2] 1033=Medium 1049=Средняя 1066=au Level=-25 Time=3	[Preset 3] 1033=Low 1049=Низкая 1066=mjber Level=-15 Time=3
--	---	--