

# **THE REC MANAGER PROGRAM**

## **MANUAL**



# The Rec Manager Program

## TABLE OF CONTENTS

THE REC MANAGER PROGRAM.....	1
MANUALTABLE OF CONTENTS .....	1
TABLE OF CONTENTS.....	2
Installation of the Rec Manager Program for Edic Tiny.....	4
Starting the Rec Manager Program.....	4
Main Menu.....	7
File Menu .....	7
Exit.....	7
Recorder Menu.....	8
Refresh content .....	8
Records .....	8
Flash Drive.....	8
Copy to Computer.....	8
Move to Computer .....	8
Copy to Default Folder .....	9
Move to Default Folder.....	9
Copy Selected Part.....	9
Erase Selected Items .....	9
Format Recorder Memory.....	9
Synchronize Clock.....	9
Settings.....	10
Demo Mode .....	10
Explorer Menu .....	10
Copy to Recorder .....	10
Show Wave-File Info.....	11
Go to Default Folder .....	11
Set Current Folder as Default .....	11
New Folder.....	11
Delete .....	11
Refresh .....	11
Folders.....	12
Explorer Window.....	12
Language.....	12
About.....	12
Audio Recorder Settings .....	12
Settings Menu .....	13
Store Settings .....	13
Restore Settings .....	13
Save to File .....	13



## The Rec Manager Program

Load from file .....	13
Factory Settings .....	13
General Tab.....	14
Mode settings .....	14
Control Type Settings .....	14
Circular Recording.....	15
Record Quality Panel .....	15
VAS Tab .....	15
Files Tab.....	15
On Recorder Connect Panel.....	15
Splitting.....	16
Default Folder .....	16
File Name Mask.....	16
Restrictions .....	17
Memory Allocation.....	17
Advanced Tab .....	17
Glossary .....	18



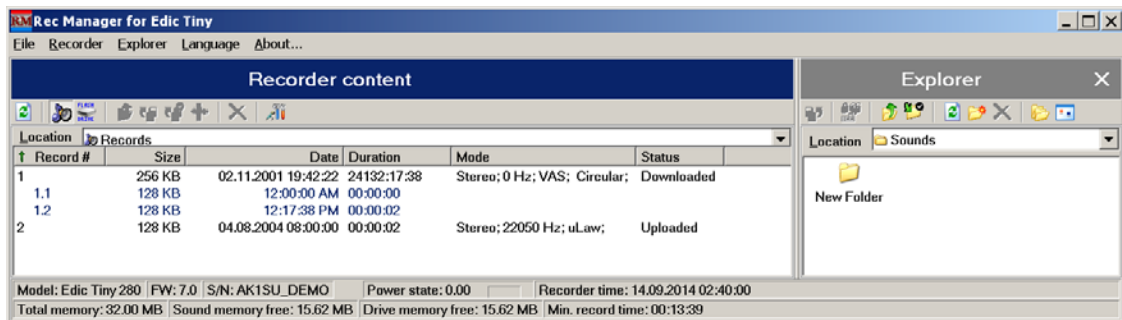
## Installation of the Rec Manager Program for Edic Tiny

The software package contains the program and the drivers, so the administrator's rights are needed. The program is provided as an executable file. The program has to be installed before the audio recorder is connected. To begin the installation, the executable file has to be started. After starting, the program shows the installation dialog. Then the program creates the folder (\...\Program Files\Edic Tiny\RecManager) and the group of Edic Tiny shortcuts in (Start\Program Menu).

To remove the program, the appropriate shortcut should be used or the Windows Control Panel's item: Add and Remove Programs.

## Starting the Rec Manager Program

The Rec Manager Program has a common Windows interface. The program's interface has four main parts:



- The Recorder Panel.  
This panel shows records or files (files that are uploaded from a computer) that are stored on the recorder's memory card.
- The Explorer Panel.  
This panel provides Windows Explorer's functionalities inside the program. This panel is always active, but it can be invisible.
- The Main Menu.  
The Main Menu gives full access to commands and operations of the program. This menu is divided in five parts: the File, the part corresponding to the Recorder Panel, the part corresponding to the Explorer Panel, the Language, and the About. Some of the



## The Rec Manager Program

commands are duplicated by the icons on the panels. Most commands have hot keys. All commands are described in the chapter The Main Menu.

- The Status Line.

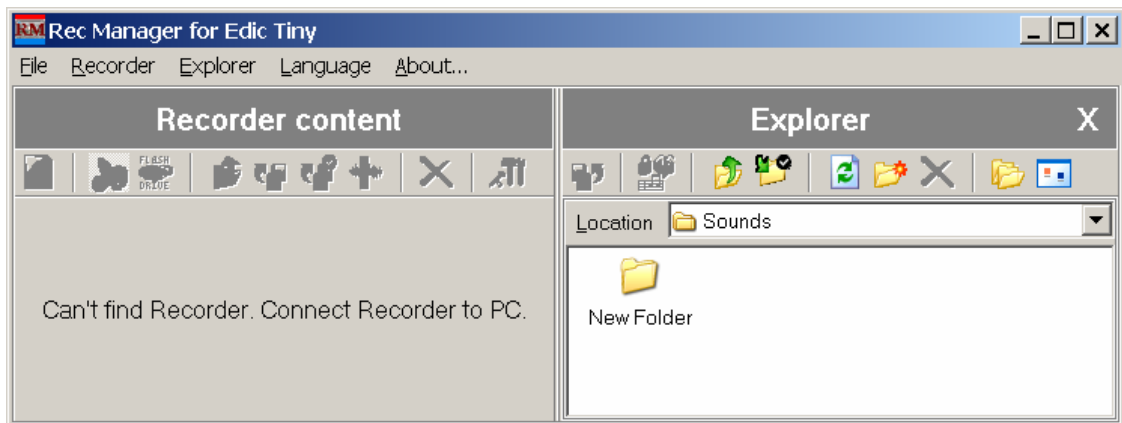
The Status Line shows some important parameters: the recorder's model, the recorder's serial number, the recorder's version of a firmware, the internal clock, the battery status, the available memory, and the longest recording time with the current setup.

As soon as the program is completely installed, it checks the hardware connection with the audio recorder. Depending on has the program found the recorder or not, the program's interface goes into one of these modes: active or passive.

In the passive mode, when the connection isn't found:

- The Recorder Panel is not active.
- The Explore Panel is active.
- The Status Line is hidden.

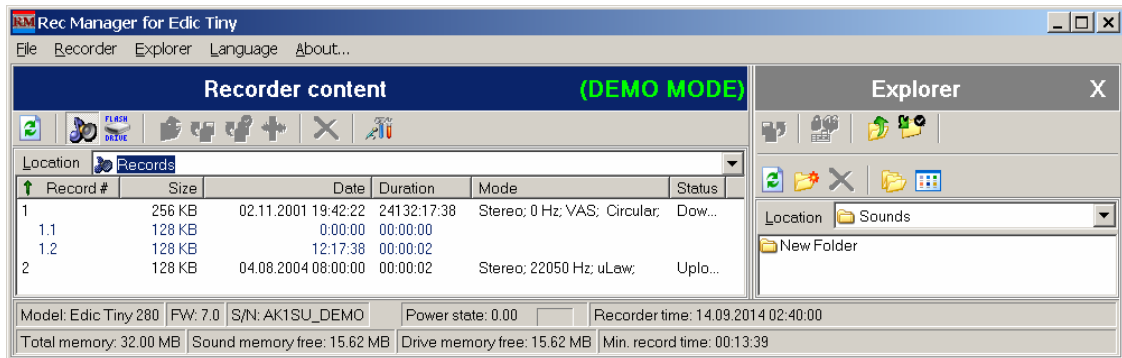
Also, a warning sign appears on the Recorder Panel:



## The Rec Manager Program

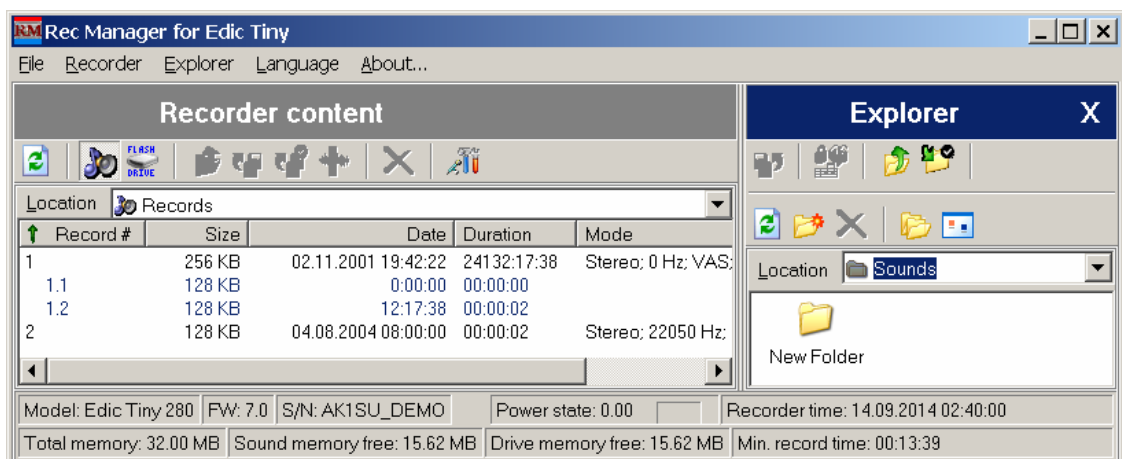
While connecting a recorder to the computer, a light-emitting diode turns on for a short time. Then it turns on while exchanging data with the computer. At this time the recorder should not be disconnected or turned off, otherwise, the data could be lost.

However, it is possible to test the program's functionality without the connection of the recorder by activating the Demo Mode. In this mode, the interface is active. The program works with a virtual audio recorder.



If the Rec Manager Program finds the hardware connection with the audio recorder Edic Tiny, the program's interface is active:

- The Recorder Panel is active.
- The Explorer Panel is active.
- The Status Line is active.



## The Rec Manager Program

The program checks all parameters that are reflected on the Status Line. If the program detects that its version is incompatible with the recorder's firmware, the program shows a message that suggests renewing either the program or the firmware. To renew the program, first, the old program has to be removed. Then a new program should be installed. To renew the firmware, a special program has to be used. This operation is described in the chapter Firmware.

In addition, the program has to check password status of the audio recorder. If the password's status is on, a dialog window appears. Then the password should be typed in the dialog box. If the password is wrong, the program suggests deleting all information including the password, records, files, and settings. This takes a few seconds. If the program is refused in deletion the information, the dialog window appears again. This succession is in progress until one of the events occurs:

- The right password is typed.  
The program is ready to work. It shows the Explore Panel and the Status Line.
- The button Cancel is pressed.  
The program is working as if the recorder is not connected.
- The audio recorder is disconnected.

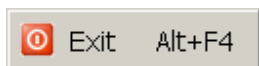
## Main Menu

The Main Menu gives the full access to all commands and operations of the program.

### *File Menu*

#### **Exit**

This command performs the exit from the program.



## **Recorder Menu**

### **Refresh content**

The program is refreshed by uploading the content from the recorder's memory card. This process is automatic.



### **Records**

The program makes the Record Panel show the records from the audio recorder's memory card.



### **Flash Drive**

When the Flash Drive is active, the Rec Manager Program makes the Recorder Panel show the list of files stored on the audio recorder's memory card. This mode could be disabled/enabled by the recorder's setup.



### **Copy to Computer**

The program copies the selected elements (records or files) from the Recorder Panel to the current folder of the Explorer Panel. The resulting names of the records are formed by the pattern rule specified by the program settings. Otherwise, the names of the copied files remain the same. If the file with the same name already exists, the program shows the dialog window that suggests: overwriting of the existing file, writing of the file under a new name, or canceling of the copying of the current element. This command is allowed, when the Explorer Panel is visible.



### **Move to Computer**

This command is similar to Copy to Computer, but the selected elements of the Recorder Panel are deleted.



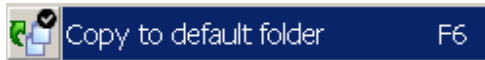


## The Rec Manager Program



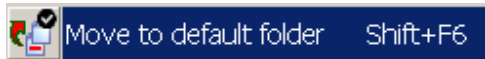
### Copy to Default Folder

The program copies the selected elements from the Recorder Panel to the default folder. The default folder is controlled by the program's setup. The Explorer Panel can be invisible.



### Move to Default Folder

This command is similar to Copy to Default Folder, but the selected elements of the Recorder Panel are deleted.



### Copy Selected Part...

This command allows copying just the selected part of the recording. The selection can be performed in the dialog window.



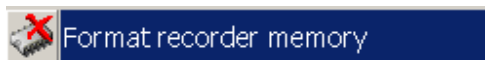
### Erase Selected Items

The program erases the selected elements of the Recorder Panel from the recorder's memory card.



### Format Recorder Memory

The program cleans the recorder's memory card.



### Synchronize Clock

The program sets the current time in the recorder's internal clock.



## The Rec Manager Program



### Settings

The program shows a setting dialog window. It allows looking at and changing the settings of the audio recorder. These settings are described in the chapter: The Settings of the Recorder.



### Demo Mode

The program can switch between normal and demo modes. When the program is in demo mode, the interface is active. The program works with a virtual audio recorder.



### Explorer Menu

Most of the commands of the Main Menu on the Explorer Panel demand that the Explorer Panel be visible.

### Copy to Recorder

The program copies the selected elements from the Explorer Panel into the recorder's memory card. This command depends on the mode of the Recorder Panel. When the **Flash Drive** is on, the copied files are identical to the selected files. However, if there isn't enough space for the copied files, the command Copy to Recorder is canceled. In the mode **Records**, the program can copy the audio files which formats are supported by the active plug-in. Otherwise, a message appears that the files' formats are not supported. Before copying, the dialog window suggests to choose the format of the audio file copied to the recorder. If there is not enough space for the full file in the recorder's memory card, the program suggests copying a part of the file.



## The Rec Manager Program

### Show Wave-File Info

The program shows a window with the characteristics of the file, which was selected on the Explorer Panel, and the file's digital sign, if one exists.



### Go to Default Folder

The program chooses a default folder, which is set in the program's setup, as a current folder on the Explorer Panel.



### Set Current Folder as Default

The program sets a current folder as a default folder.



### New Folder

The program creates a new folder in a current folder.



### Delete

The program deletes selected elements on the Explorer Panel.



### Refresh

The program refreshes the content of the Explorer Panel.



## The Rec Manager Program

### Folders

The program shows the file system of the computer.



### Explorer Window

The program shows/hides the Explorer Panel.

Besides the listed commands, the Explorer Panel supports the Context Menu for the selected elements (list of directories, folders, and files) by using the right mouse button or the corresponding hot key. The Content Menu is identical to the menu of the Microsoft Windows' Explorer.



### Language

The program can change the language of the interface.

### About

The program shows a dialog window that has information about the current version of the program and the active plug-in.

## Audio Recorder Settings

To change the audio recorder settings, go to the **Recorder menu** and choose the **Settings command**. The **Recorder Settings** dialog window appears. In this window, there are four tabs: General, VAS, Files, and Advanced. According these tabs' settings, the program changes the audio recorder settings. In addition, on the top of the **Recorder Settings** dialog windows, there is **Settings menu**.



## ***Settings Menu***

The **Settings Menu** provides the operating with settings. Access to these commands can be accomplished using the button icons on the top of the dialog window. These button icons have the appropriate tooltips.

### **Store Settings**

The program saves the settings from the tabs of the **Recorder Settings** dialog window.

### **Restore Settings**

The program restores the settings that were in the tabs before they were changed.

### **Save to File**

The program saves the settings from the tabs to a file.

### **Load from file**

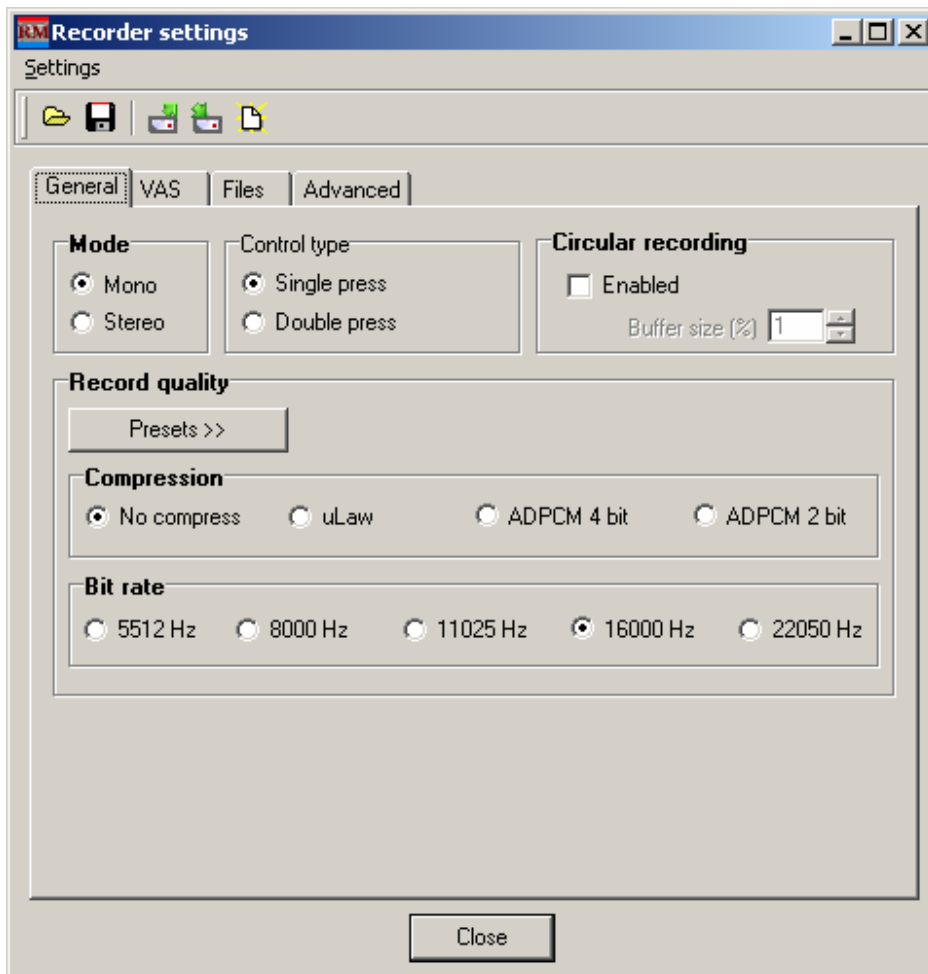
The program loads the settings from a file.

### **Factory Settings**

The program loads the default settings.



## The Rec Manager Program



### **General Tab**

#### **Mode settings**

There are two radio buttons on this **Mode settings** panel: Mono. According to which radio button is on, the mono mode is turned on.

#### **Control Type Settings**

Control type settings allow choosing the control of the audio recorder using the correspondent radio buttons.



## The Rec Manager Program

### **Circular Recording**

Circular recording turns on loop recording mode if the **Enabled** check box is on.

### **Record Quality Panel**

The Presets button on this panel opens menu with three commands: Highest, Medium, and Low. Which command is activated, the program set the correspondent recording quality.

The setting one of the Compression radio buttons turns on the correspondent compression method.

The setting one of the Bit rate radio buttons turns on the correspondent bit rate.

### ***VAS Tab***

On this tab, there is some settings that turn on the **voice activation system**, a level of the threshold, time after that recording stops, the method of reflection the recordings on the Content panel, and the method of uploading them to the PC.

### ***Files Tab***

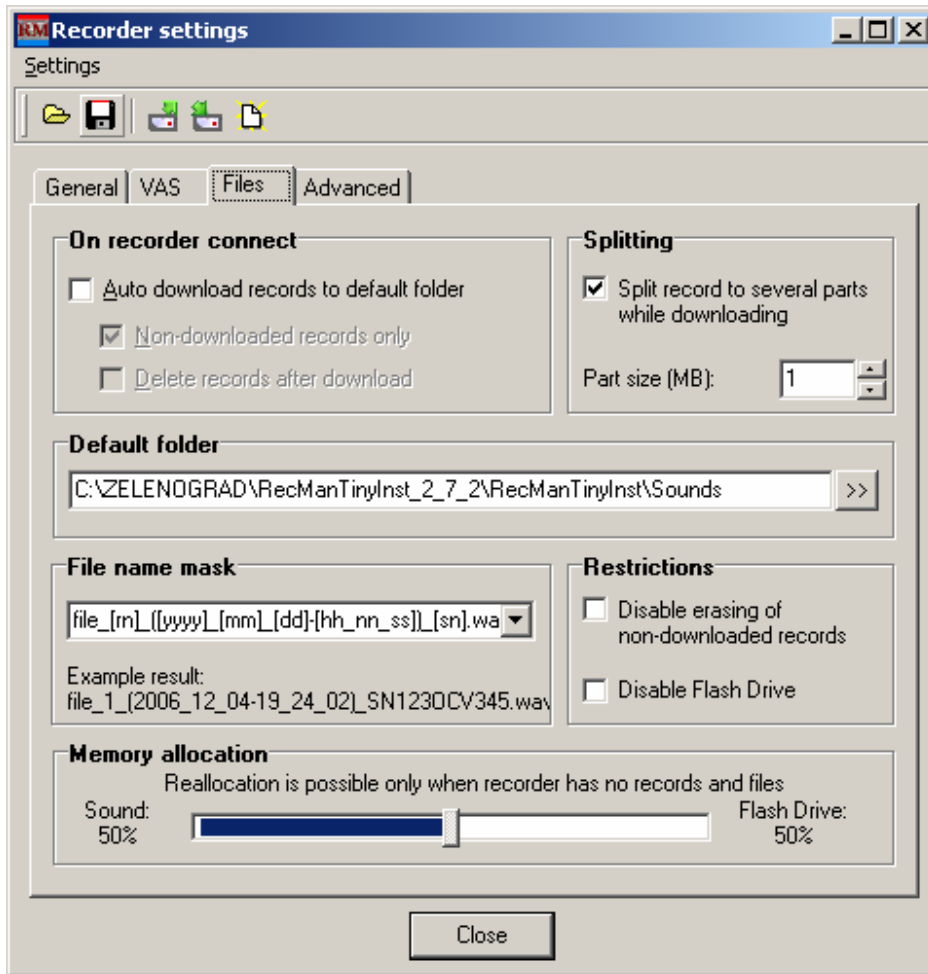
The settings of the Files tab allows operating with the recordings saved in the recorder and the files saved in the computer.

### **On Recorder Connect Panel**

On this panel the check boxes set the correspondent settings: auto downloading records to a default folder, auto downloading non-downloaded records only, and deleting records after downloading.



## The Rec Manager Program



### Splitting

If check box on the Splitting panel is on, the program splits the record to several parts while downloading.

### Default Folder

There is a folder that the program uses as default. The user can change it.

### File Name Mask

The rules that define the recording name after they copied to a PC.





## The Rec Manager Program

### Restrictions

This panel has two check boxes that disable erasing of non-downloaded records and/or a flash drive.

### Memory Allocation

Memory allocation panel has the slider control that divides the recorder memory space on two parts: **sound recording**, and the **flash media**.

### *Advanced Tab*

This tab has three panels that set the recorder's **once timer**, the recorder's **daily timer**, and a recorder **password**. Also, the special check box turns on **synchronizing** the recorder internal clock with the computer's clock.



## Glossary

**Demo mode** is the mode of the program when a recorder is not connected to a PC, but it is emulated by the program.

**Default folder** is a folder that some commands use automatically. This folder can be set by a user.

**Digital audio watermark** is additional data (time, date, audio recorder index) that are on the audio recordings.

**Firmware** is the program that is in the recorder nonvolatile memory.

**Recording** or **record** is an audio data recorded by an audio recorder and saved in its memory or copied to a PC

**Voice activating system, VAS**, allows minimizing memory space used for recording by deleting pauses according to some settings.

