

# **Rec Manager for EDIC-mini Tiny**

User Manual

# Contents

Contents.....	2
Overview.....	3
<u><a href="#">Glossary</a></u> .....	<u>3</u>
<u><a href="#">What is Rec Manager Program</a></u> .....	<u>3</u>
<u><a href="#">Main Program Features:</a></u> .....	<u>4</u>
The Program Installation.....	5
Working With the Program.....	6
<u><a href="#">Interface</a></u> .....	<u>6</u>
<u><a href="#">Starting the Program</a></u> .....	<u>7</u>
<u><a href="#">The Program Setting</a></u> .....	<u>7</u>
<u><a href="#">Main Menu</a></u> .....	<u>7</u>
Recorder Settings.....	10

# Overview

## Glossary

1. **Recording** – an audio recording that is made by an audio recorder (or downloaded from a computer) and saved in the recorder's memory.
2. **Demo-mode** – a program operating mode when the recorder is not connected, but emulated by the program. In this mode, the program works as the recorder is connected.
3. **Default Folder** – a previously set folder (chosen by a user) that some commands use to upload recordings and files from the recorder.
4. **Digital Watermark** – additional data that are added at the end of the final recording's file while uploading (these data keep the information about the recorder, which provided the recording, and also help control the record's integrity was there any change in the recording after its uploading)
5. **EPROM (firmware)** – a program that provides the recorder operation (kept in FLASH memory)
6. **Voice Activating System (VAS)** – a part of the recorder that checks if the audio signal is higher than a previously set level or not (silence) according to set criteria. If there is not audio signal, recording to the recorder's FLASH memory stops. If the signal appears, recording starts. The main goal is to reduce memory consumption. At this, as a rule, the period of autonomic work increases.

## ***What is Rec Manager Program***

The Rec Manager for Edic Tiny is an application that works with **Edic Tiny recorders**.

The program is available for Windows 98/2000/XP. For normal program functionality, computer hardware has to be the same that recommended for a normal Windows 98/2000/XP operation.

### ***Main Program Features:***

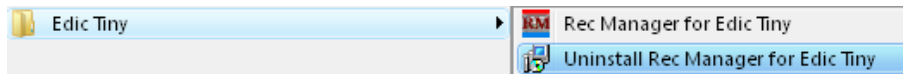
- Reviewing the recorder's memory;
- Uploading recordings from the recorder to a PC;
- Erasing recordings from the recorder's memory;
- Downloading recordings from a PC to the recorder;
- Showing the status of the recordings (uploaded/not uploaded/downloaded);
- Creating a recording's digital watermark (only for the recordings that were created by the currently connected recorder);
- Using a part of the recorder's memory as a flash memory (downloading, uploading, and erasing any available files) – Flash Drive;
- Synchronizing of the recorder clock with the clock of the computer;
- Showing the rechargeable accumulator's status;
- Setting of the recorder's parameters;
- Formatting the recorder's memory;
- Operating in a demo-mode;
- Supporting a multi language mode.

### *Notes:*

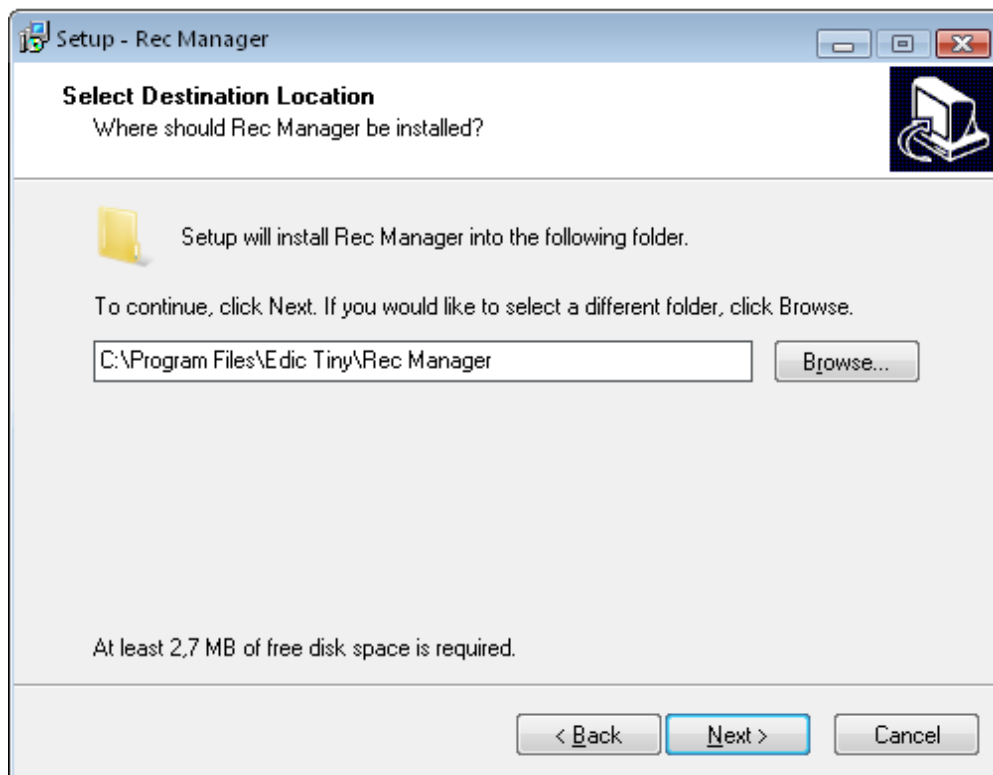
1. Depends on the recorder's model
2. English is set by default

## The Program Installation

The program is available as an installation file. To install the program, run the installation file and follow the instructions. By default, the installation is into the folder: {Program Files}\EdicTiny\RecManager. A group of EdicTiny icons appears in Start\Programs.



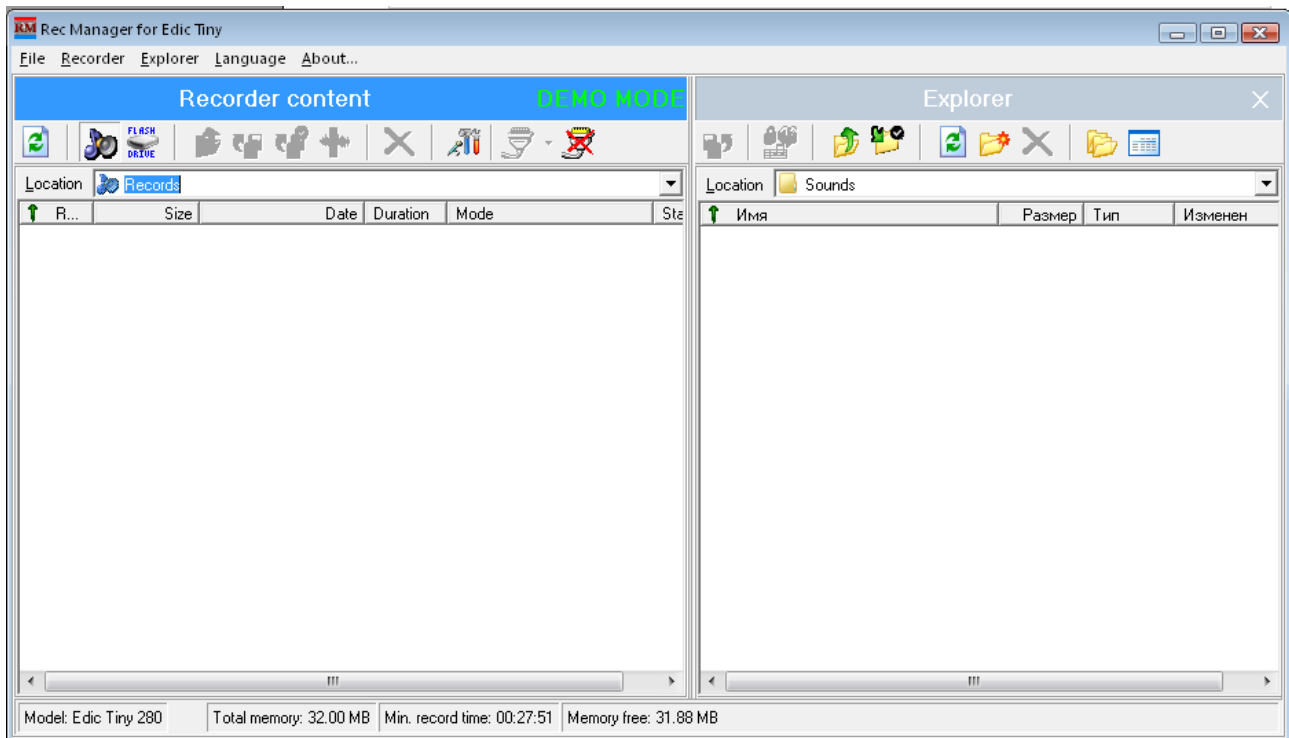
You can uninstall the program using the icon from the Edic Tiny icon group in Start\Programs or by standard way with Control Panel \ Add or Remove Programs. The installation file includes recorder's drivers needed for a connection to a computer. So to install program, you need a PC administrator's rights.



# Working With the Program

## Interface

The program interface is correspondent to a standard Windows interface. The main interface part is the Recorder content panel that shows a list of recordings or files that are in the recorder's memory. Also the Explorer panel is available. This panel shows a computer directories' content and is analogous the Explorer program.



At the bottom of the program's window, there is a status line that shows the information about the recorder ( model, serial number, firmware's version , the recorder's clock, the rechargeable battery status, the amount of free memory (along with the maximum recording time according to the current parameter settings), and etc.) The status line is in the program window if the recorder is connected to the computer.

If there is any operation with the recorder, a notice appears in the middle of the program's window that shows the name of the operation and its progress. While the operation is in a progress, the program cannot do any additional activity.

The full access to the program's command and operations is in the Main Menu. Some of the main menu commands are also presented as buttons on the tool panel. Most commands have hot keys. The full description of the commands is in the Main Menu section.

Most commands, which reference to the recorder, are in the Recorder menu. Some of them are duplicated by buttons in the upper part of the Recorder content panel. Analogously, the commands, which reference to the Explorer panel, are in the Explorer menu. There is the Explorer Window command that allows to show/hide

this panel. Some commands demand this panel to be visible; they are most of the Explore menu commands and Copy To PC and Move To PC commands.

## Starting the Program

To start the program, just use the program icon that was created during installation. At the beginning, the program tries to find a connection with the recorder. If the connection is detected (in the demo-mode, the connection is always detected), the Recorder content panel appears in the reviewing content mode. At the bottom of the program's window, the status line appears.

## The Program Setting

### Main Menu

This section describes the main menu parts and their commands.

### File

**Exit** – to exit the program.

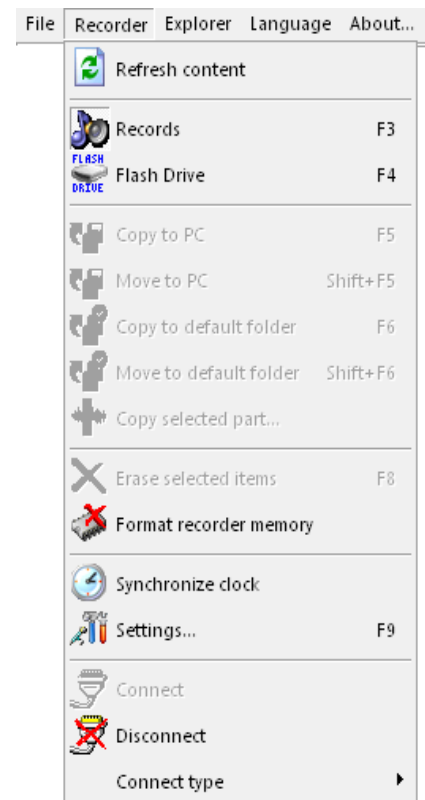
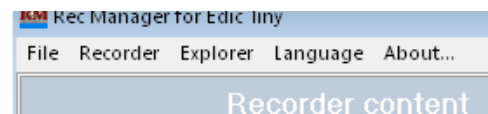
### Recorder

**Refresh content** – refreshes the recorder's memory content (reloads a list of the recordings and files that are in the recorder's memory). Usually it is automatic.

**Records** – switches the Recorder content panel in to a mode of showing recordings that are in the recorder's memory.

**Flash Drive** – switches the Recorder content panel in to a mode of showing files that are in the recorder's memory. This mode can be forbidden by the recorder's settings or not supported by the recorder.

**Copy To PC** – copies the items (recordings or files) selected in the Recorder content panel to the current folder of the Explorer panel. While copying recordings, the result file names are created on the base of a mask that is set in the program settings. While copying files their names stay the same. If there already is a file with the same name in the



computer, the program suggests overwriting the file, changing the file name, or canceling the command. This command is active when the Explorer panel is visible.

**Move To PC**– is analogous to Copy To PC command, but after the command is finished, copied items are deleted.

**Copy to default folder** – copies selected in the Recorder content panel items (recordings or files) into a default folder that is set in the program settings. The Explorer panel can be invisible.

**Move to default folder** - is analogous to Copy to Default Folder command, but after the command is finished, copied items are deleted.

**Copy selected part...**– allows to copy the selected items (recordings or files) from the Recorder content panel to the current folder of the Explorer panel.

**Erase selected items**– erases from the recorder's memory items (recordings or files) selected in the Recorder content panel.

**Format recorder memory** – erases all the items (recordings or files) from the recorder's memory

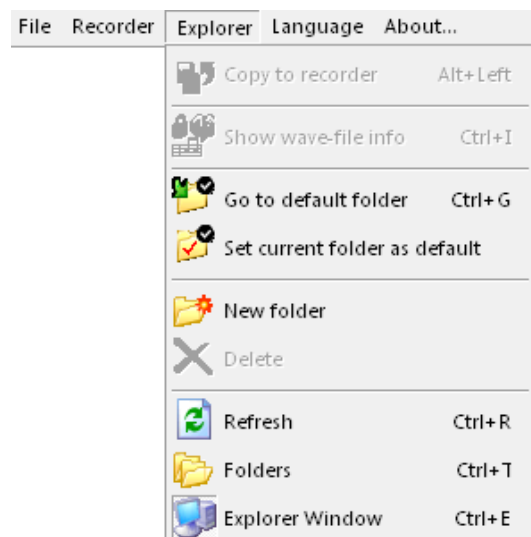
**Synchronize clock** – sets the current PC time in the recorder

**Settings** – shows a dialog window where you can see and change the recorder's settings.

**Demo mode** – switches the program in the demo-mode

## Explorer

**Copy to recorder** – downloads selected in the Explorer panel items into the recorder. This command depends on the mode of the Recorder content panel. In the Flash Drive mode, files are copied without any change: after following uploading, they will be identical to the original ones. If there is no free space for copying files, the command is canceled. In the showing content mode, it is possible to copy only audio files which formats are supported by the program; otherwise, a notice appears that the format is not supported. Before copying audio files, the dialog window appears where you can choose a format in which the record will be downloaded to the recorder. In comparison of copying files, if there is not free space for a whole audio file (the needed amount of memory is detected according to the chosen format), you can download the audio file partly according to the free



memory space.

**Show wave-file info** – shows a window with characteristics of the chosen in the Explorer panel audio file along with the information about the file's digital watermark.

**Go to default folder** – sets a default folder of the program settings as a current folder of the Explorer panel.

**Set current folder as default** – sets the current folder as a default folder.

**New folder** – creates a new folder in the current folder.

**Delete** – erases selected in the Explorer panel items.

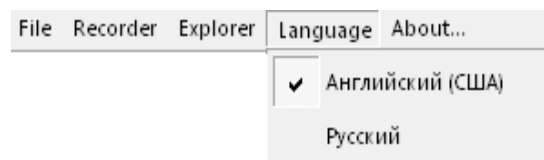
**Refresh** – refreshes the Explorer panel content.

**Folders** – shows/hides the folders' directories

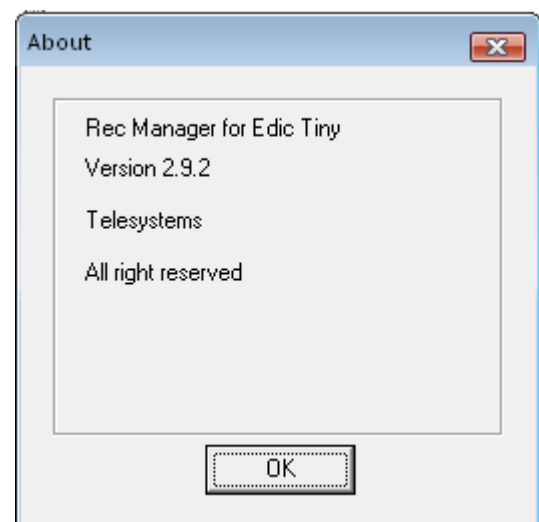
**Explorer window** – shows/hides the Explorer panel

*Notes: Besides counted functions of the Explorer panel, the list of folders and files supports a content menu for all the items. Use the right mouse button or a correspondent button of the keyboard to call this menu. This menu is identical to the menu of the Explorer for Windows.*

**Language** – allows to choose a language for the program interface (there are all the available for the program languages in the list)



**About...** – shows a dialog window with the information about the program version



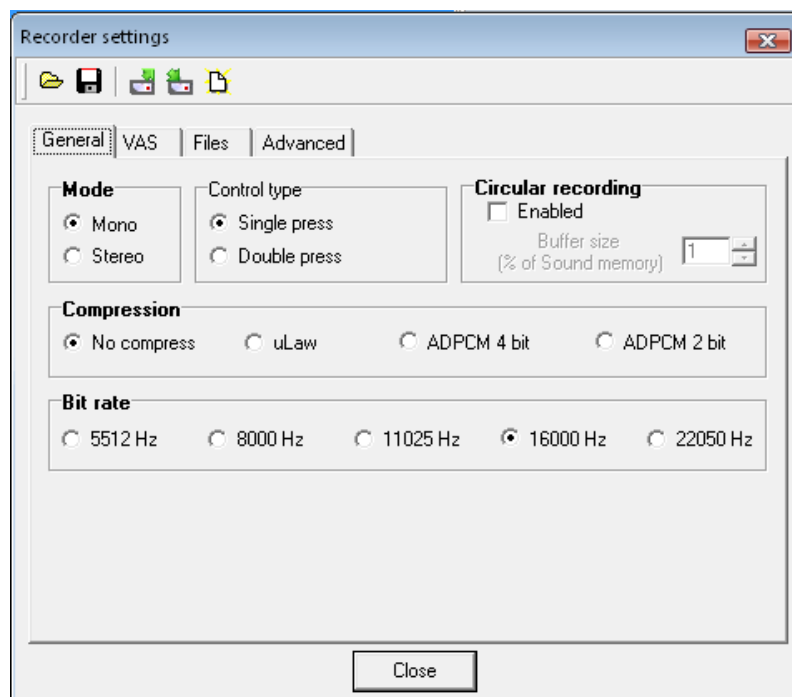
## Recorder Settings

You can review and change the recorder settings using **Recorder /Settings** menu. In the upper part of the panel there are commands for work with recorder's settings:

- Downloading previously saved settings from a computer hard drive
- Saving current settings on a computer hard drive
- Reading settings from the recorder
- Downloading settings to the recorder
- Resetting the manufactory's settings

The Settings panel is divided on some groups.

### General



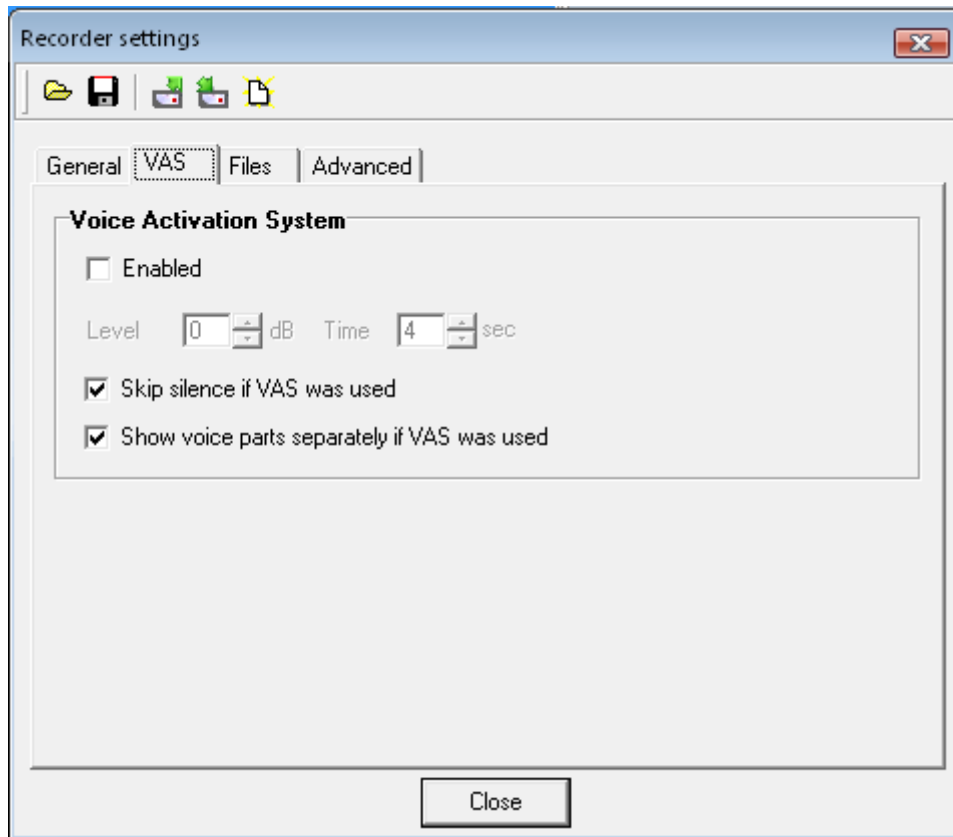
**Mode** – allows to turn on stereo/mono recording mode.

**Control type** – allows to choose a method of control (depends of the recorder's model).

**Circular recording** – turns on circular recording mode. You can set the recorder's memory space that would be used for circular recording.

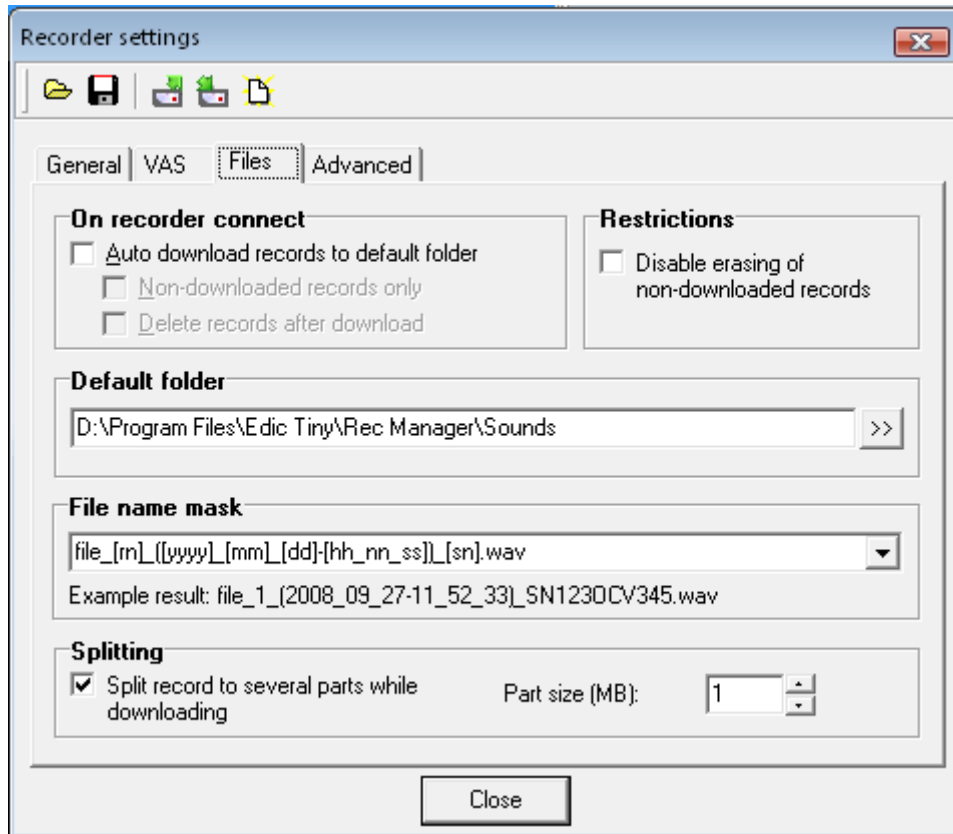
**Record quality** – allows to choose a level of recording quality.

## VAS



**Voice Activation System** – turns on Voice Activation System. You can change VAS settings (threshold). Also you can set a method of viewing of recordings with VAS on the Recorder panel. You can choose a method of uploading these recordings to a computer (with or without pauses in recordings).

## Files



**On recorder connect** – allows to detect activities to be done while connecting the recorder to a computer.

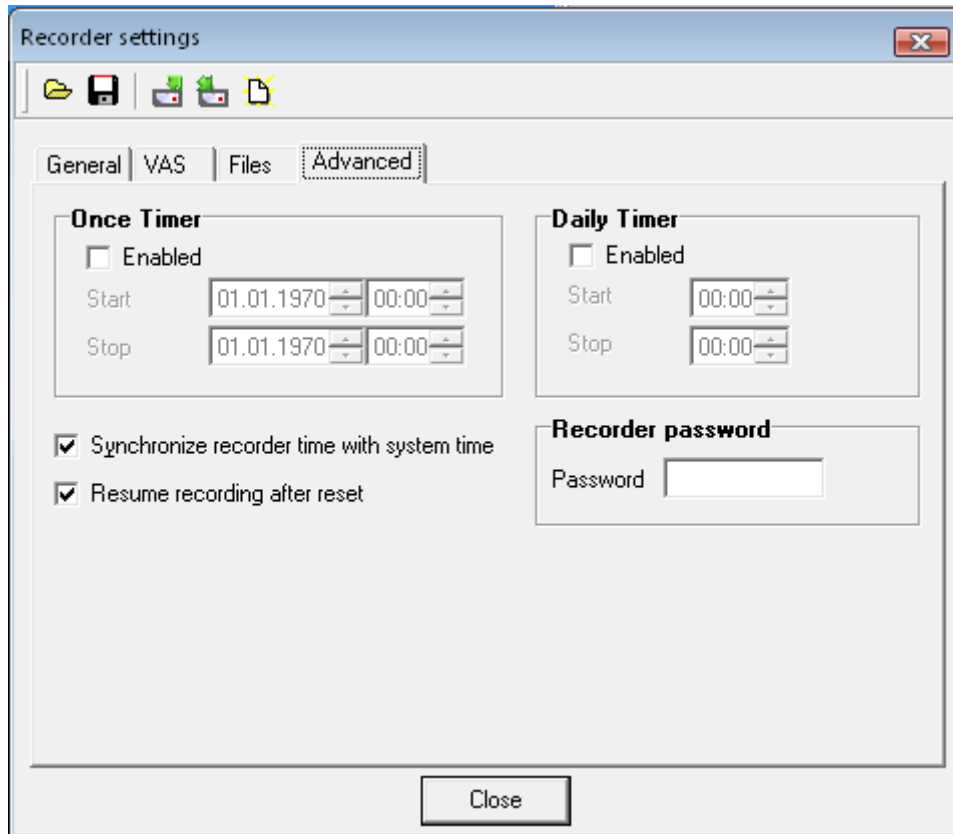
**Restrictions** – allows to forbid erasing recordings that have not been downloaded.

**Default folder** – allows to set a default folder in a computer.

**File name mask** – allows to assign rules to name the recordings while uploading to a computer.

**Splitting** – allows to assign a maximum size of a final file. If the recording is larger than this size, the program will create one more file, then one more again, and etc. while the whole file is not uploaded.

## Advanced



**Once Timer** – allows to turn on/off the built-in once timer – date and time of turning on/off of the recording.

**Daily Time** – allows to turn on/off the built-in daily timer – date and time of turning on/off of the recording.

**Recorder password** – allows to protect access to the recorder's content by a password. If the password is set, it will be asked for while connecting to a computer. If you need to remove the parole protection, you need to leave the password field blank and save the recorder's settings. If you forget the password, to get the access to the recorder, you have to erase the recorder's content.

**Synchronize recorder time with system time** – allows automatic synchronization of the recorder clock with the computer's one.